

# **JAVES**

**Projection Products**



## **IMD-440 USB LED Micro Projector**

User Menu (Preliminary)



**Javes Projector**

Address: Room 207, 2/F., Block B, Seaview Estate, Watson Road, North Point, Hong Kong.

Tel: (852) 2887 5151

Fax: (852) 2503 1144

e-mail: [jng@javesprojector.com](mailto:jng@javesprojector.com)

# Contents

<b>Introduction.....</b>	<b>2</b>
Features .....	2
System Requirements.....	2
Package Contents.....	2
Note .....	2
<b>Device Installation on Windows .....</b>	<b>3</b>
Device Driver Installation .....	3
Verification device driver installation .....	5
Device driver un-installation .....	6
<b>Function description.....</b>	<b>7</b>
“Primary” Mode .....	7
“Extended” Mode .....	7
“Mirror” Mode.....	7
“OFF” Mode.....	7
<b>Technical Specifications .....</b>	<b>8</b>
<b>Q &amp; A .....</b>	<b>9</b>
<b>Troubleshooting Tips.....</b>	<b>9</b>
<b>Disclaimer .....</b>	<b>10</b>

## **Introduction**

Thank you for purchasing the USB 2.0 LCOS Projector. The product will add a secondary display to your existing Desktop or Notebook computer running Windows 2000/XP/Vista. The connected display can act as mirrored or extended desktop of the main display on your PC. The flexibility of the common USB 2.0 technology saves the need to open the computer or struggle with compatibility issues related to the VGA card.

## **Features**

- ✓ Color Filter LCOS inside
- ✓ Resolution 640X480
- ✓ 100c.c. Small in Size
- ✓ 80g Light in Weight
- ✓ Multi graphics display mode – Primary, Extended and Mirror
- ✓ Plug-and-Play USB connectivity
- ✓ USB 2.0 compliant

## **System Requirements**

- ✓ Pentium 4 / Celeron Family, AMD K6 / Athlon / Duron Family. 1GHz or higher processor.
- ✓ 512MB RAM or higher(Higher memory recommended for optimal performance)
- ✓ Available USB 2.0 Port
- ✓ Windows 2000 SP4 / Windows XP SP2 / Windows Vista

## **Package Contents**

- ✓ USB LED Micro Projector
- ✓ USB 2.0 Particular Cable
- ✓ CD ( User Menu and driver )
- ✓ Tripod

## **Note**

- ✓ Unplug the device to your PC or Notebook before executing the setup or un-installation program.

# Device Installation on Windows

## Device Driver Installation

**Note:** Please do not plug the projector into the system before the O.S. finishes the boot procedure, or the driver installation is completed.

Follow these steps to install your new USB 2.0 LCOS Projector:

1. Insert the installation CD and follow the instructions.
2. The dialog will appear. Then press the “Continue” button.




3. When the installation is completed, please reboot the computer.

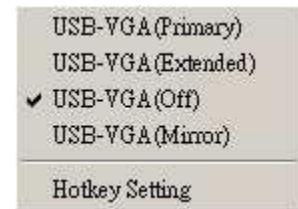


4. After reboot, plug the LCOS Projector into an available USB 2.0 port.(Note \*)

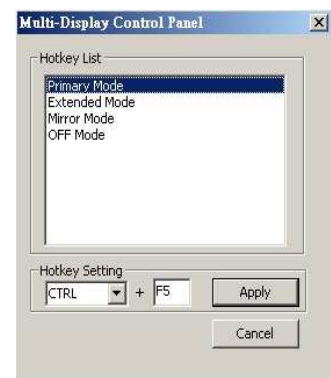
5. And then the icon  will appear at the tool bar.

6. You should be able to use the LCOS Projector as a secondary display now.

7. Right click on the icon , you can select the display mode as described at “Function Description” ,and set the “Hotkey Setting”.



8. Select your preference keys as the Hotkey of the different display modes on the dialog.



Note \*: There are 2 types of connectors of the particular USB cable. Please plug the both connectors to your computer for the normal operation.



The connector includes power and signal wires. If only the connector is plugged, the projector still can work in darker mode.



The connector only includes power wires. The projector won't work, if only the connector is plugged.

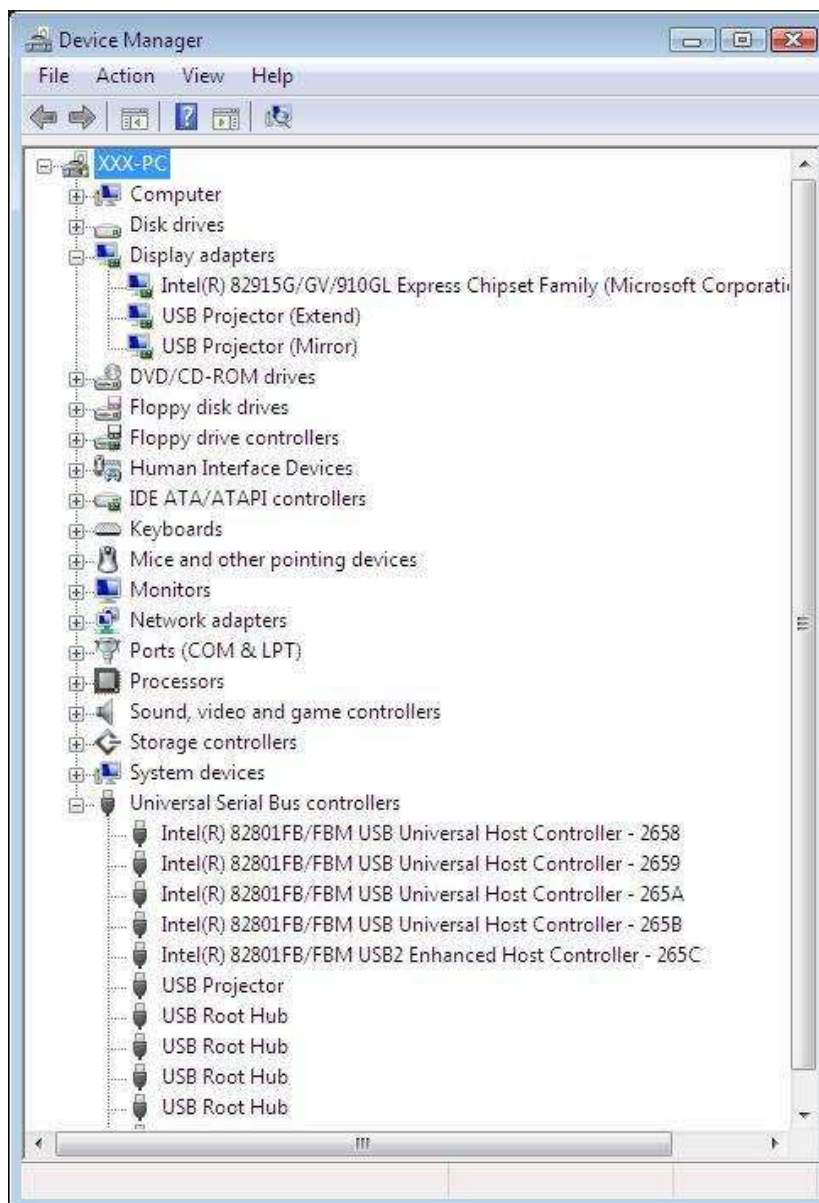
## Verification device driver installation

The following procedure allows you to verify the device driver installation.

Please right click "My Computer" → "Properties" → "Hardware" → "Device Manager", and then double click "Display adapters" and "Universal Serial Bus Controllers".

✓ It shows a new direction: "USB2.0 Projector-0902" on "Universal Serial Bus Controllers".

✓ It shows two new directions: "USB2.0 Projector-0902(Extend) & USB2.0 Projector-0902(Mirror)" on "Display adapters".



## Device driver un-installation

Step 1:

Start menu:

Click “Start” → “Control Panel” → “Add or Remove Programs”.

Classic start menu:

Click “Start” → “Settings” → “Control Panel” → “Add or Remove Programs”.

Select “**USB2.0 Projector**” item. Click “Remove” button.



Step 2:

Unplug the device and click “OK” to continue.



Step 3:

Select “Yes, I want to restart my computer now” and click “Finish” to reboot. After reboot, you will complete the driver un-installation.

## **Function description**

This section describes the main functions provided by the USB LED Projector.

It supports 3 kinds of Display mode: Primary, Extended and Mirror.

### **“Primary” Mode**

The system's main graphics adapter will be automatically off. And the USB LED Projector will now act as the primary Windows desktop. Please be advised that some display utility and drivers that be shipped with certain AGP and built-in display adapters may prevent this option from working on some systems. You can disable the other utility program (usually found in the same toolbar located on the bottom right hand corner) to make the function work properly.

### **“Extended” Mode**

The USB LED Projector will work as “Extended” desktop which extends the primary Windows desktop of your system. You can change the relative position of the extended desktop under the Display Properties.

### **“Mirror” Mode**

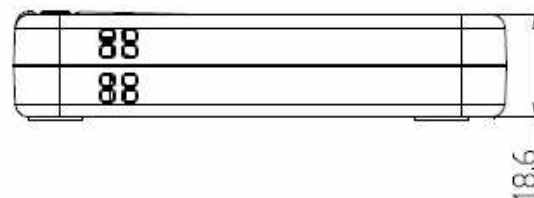
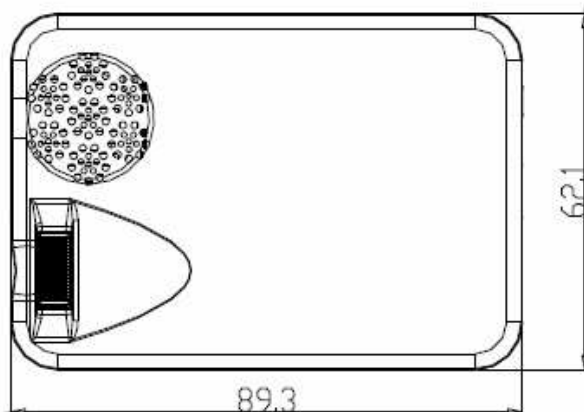
By setting this mode, the Windows desktop will be mirrored / replicated to the secondary CRT/LCD monitor. The primary screen resolution will follow the USB LED Projector setting.

### **“OFF” Mode**

This option disables the USB LED Projector on the system.

# Technical Specifications

Description		Specification
Imager	Technology	LCOS
	Size	11.1 mm (0.44")
	Image Resolution	640 x 480 Pixels
	Image Aspect Ratio	4:3
Optical		
	Contrast ratio	100(Typical)
	Uniformity	90%(Typical)
	Color gamut (NTSC)	35%
	Projection Distance	0.2m to Infinite
	Lens Offset	1:1(None)
	Image Size (normal operation)	5.0" @ 0.2m, 73.5" @ 3.0m
	LED power	2.7W
Power	USB Power	1USB : 0.5A 2USB : 1A
	Power consumption (W)	5W
	Inputs	USB
Tripod Socket		1/4"-20
Operating Temperature		10°–27°C (50°–80°F)
Altitude		Sea Level to 1,829 m (6000')
Dimension	Size (W x H x D) mm	89.3 x 62.1 x 18.6 (mm)
Weight		T.B.D
OS Compatibility		Windows 2000/XP/Vista



## **Q & A**

The section describes the common Q&A regarding to installation or operation of the USB LED Projector.

Q: Why can't we make the USB LED Projector primary display?

A: Some video cards ship their product with a utility that prevents other video cards from being set as the primary card. Check the bottom right hand corner taskbar for the utility. Disable the utility before switching our adapter to be the primary display mode.

Q: Why won't my DVD player work when I move it over to the extended display?

A: Some DVD playback software packages do not support play on a second display adapter of any kind. You may try to open the program in the secondary display first before playing the DVD.

Q: How come my video will not play on Media Player if I move it over to the extended desktop?

A: Check that you have moved the Media Player window completely over the second screen.

Q: Why does my mouse not move pass the right side of the screen as it should on extended desktop?

A: Check the display settings and make sure your display number "2" is on the right side of display number "1". You can rearrange how Windows treats each display in relation to each other in Display Properties settings.

## **Troubleshooting Tips**

The following trouble shooting tips may help if you are experiencing the difficulties using the device. Contact your dealer for additional assistance if needed.

Check to make sure that all connectors are plugged in correctly.

Make sure the USB port is USB 2.0.

Try a different USB 2.0 port or another computer.

Check the power led indicator is ON.

Try connecting the adapter directly instead of through the hub.

Unplug all other USB devices from the system.

Make sure to restart your computer after the driver installation.

Unplug the device and re-insert it.

For better performance on watching DVD on the secondary display, it is recommended to use the following license free software.

Media Player Classic:

<http://sourceforge.net/projects/guliverkli/>

For better DVD movies file decoder complied with Windows Media Player, suggestion the following free software.

[http://www.free-codecs.com/download/K\\_Lite\\_Codes\\_Pack.htm](http://www.free-codecs.com/download/K_Lite_Codes_Pack.htm)

Selecting Primary mode may disable the main system display on certain Intel graphics solution based computer system.

If you have problems during the boot up process, start your computer in Safe Mode and un-install the driver. Hold the CTRL key until the Windows start menu appears and select Safe Mode.

## **Disclaimer**

Information in this document is subject to change without notice. The manufacturer does not make any representations or warranties (implied or otherwise) regarding accuracy and completeness of this document and shall in no event to be liable for any lose of profit or any commercial damage, including but not limited to special, incidental, consequential, or other damage. No part of this document may be reproduced or transmitted in any form by any means, electronic or mechanical, including photocopying, recording or information recording and retrieval systems without the express written permission of the manufacturer.