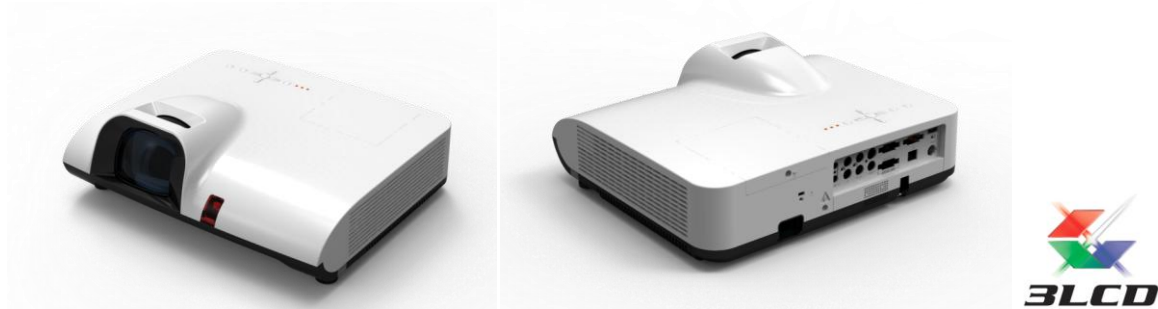


## Super Short throws lens 3LCD Projector

Project 80" diagonal image at one meter only



### Specification:

Model:	AMT-LX630ST
Native resolution	4:3 XGA (1024 x 768)
Display technology	3LCD
Brightness	ANST 3000 lumens
Contra ratio	>= 500:1 (FW FB ANSI Digital)
Lamp	230w 4000hrs
Noise Level	< 35 dB@ 27 °C
Projection mode	Front / Real / Ceiling
Input	S-video, Video, Computer 1(RGB/Component/Scart), Computer 2(RGB)
Output	VGA(Input 2), Mini Jack(Audio Out)
Computer compatibility	VGA, SVGA, XGA, SXGA, WXGA, UXGA
Video compatibility	Auto, PAL, SECAM, NTSC4.43, PAL - M, PAL - N, Auto, HDTV(480i,480p,575i,575p,720p,1035i,1080i)
Aspect ratio	4:3(Standard) & 16:9 (Video / Data)
Projection lens	Manual Focus Lens
Digital Zoom	½ x ½ - 4 x 4
Throw ratio	Vertical +- 30°
Projection distance	80" @ 1m, 0.5 - 2.56m
Image ratio	110%
Image size	40" ~ 200"
Power consumption	280w
Power supply	100 ~ 240V(MAX 3.8A) @ 50 – 60Hz
Speaker	Stereo 2 x 3w
Standard accessories	User Guide, AC power cord, Remote control, Battery, Lens cover
Interface Languages	19 Languages (such as English, Chinese(T / S ), German)
Dimension	345 x 305 x 93.5 mm
Weight	3.8kg